

# Over The Rainbow

Tom Vollmer Arrangement

♩ = 80 F

Dm

Am

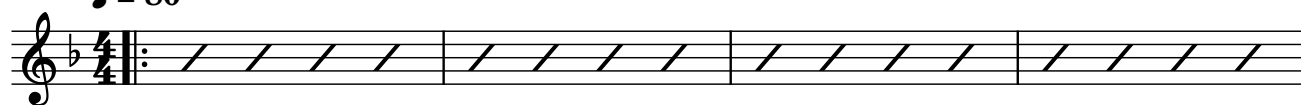
F

B♭

B♭m

F

F7



5 B♭ B♭m F D7 G C F Caug



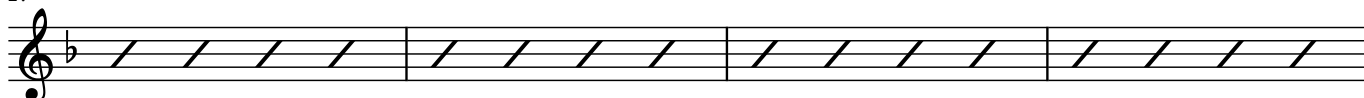
9 F C7 F6 C7



13 F E7 Am Gm7 Caug



17 F Dm Am F B♭ B♭m F F7



21 B♭ B♭m F D7 G C F D.C. al Fine  
Caug



25 F Gm11 C7 F#maj7 F6/9

